

SUBIACO RESTORATION

EST. 1981

LVL & Framing

RETAIL PRICE LIST

Prices inc. GST

SUBLACO RESTORATION

EST. 1981

ITI - LVL E13.2 H2S Treated

Metsä Kerto® LVL S-beam, proudly distributed by Subiaco Restoration is a laminated veneer lumber product used in all types of construction projects, from new buildings to renovation and repair. Kerto LVL is light, strong and dimensionally stable. Metsä Kerto® LVL S-beam comes from the sustainably managed and PEFC-certified forests of Metsä Group's Finnish forest owner members, ensuring that the origin of the raw material is traceable.



*STOCKED

DIMENSIONS (MM)	LENGTHS (M)	L/M
200x45	4.8 / 6.0	\$ 30.60
200x63	4.8 / 6.0	\$ 42.82
240x45	4.8 / 6.0	\$ 36.72
240x63	4.8 / 6.0	\$ 51.40
300x45	4.8 / 6.0	\$ 45.89
300x63	4.8 / 6.0	\$ 64.24

*Other sizes available (2/3 day turn around)

DIMENSIONS (MM)	LENGTHS (M)	L/M
150X45	3.0 to 12.0m in 300mm increments	\$ 22.94
170X45	3.0 to 12.0m in 300mm increments	\$ 26.01
170X63	3.0 to 12.0m in 300mm increments	\$ 36.41
200X45	3.0 to 12.0m in 300mm increments	\$ 30.60
200X63	3.0 to 12.0m in 300mm increments	\$ 42.82
240X45	3.0 to 12.0m in 300mm increments	\$ 36.72
240X63	3.0 to 12.0m in 300mm increments	\$ 51.40
300X45	3.0 to 12.0m in 300mm increments	\$ 45.89
300X63	3.0 to 12.0m in 300mm increments	\$ 64.24
300X75	3.0 to 12.0m in 300mm increments	\$ 79.52
360X45	3.0 to 12.0m in 300mm increments	\$ 55.09
360X63	3.0 to 12.0m in 300mm increments	\$ 77.10
400X45	3.0 to 12.0m in 300mm increments	\$ 61.19
400X63	3.0 to 12.0m in 300mm increments	\$ 85.66
400X75	3.0 to 12.0m in 300mm increments	\$ 106.03
450X63	3.0 to 12.0m in 300mm increments	\$ 96.37
96X51	3.6 to 7.2m in 300mm increments	\$ 15.58
65x63	4.5m	\$ 12.12

SUBLACO RESTORATION

EST. 1981

H2 - LVL SmartFrame - Tillings

Design guides available on request. H2 LVL is treated to order, check lead time & prices.

Lengths 11.1 & longer will be charged and supplied as 12.0 m



DIMENSIONS (MM)	LENGTHS (M)	L/M
90 x 35	2.1 to 12.0m in 300mm increments	\$ 12.89
120 x 35	2.1 to 12.0m in 300mm increments	\$ 17.19
140 x 35	2.1 to 12.0m in 300mm increments	\$ 20.06
240 x 35	2.1 to 12.0m in 300mm increments	\$ 34.38
90 x 45	2.1 to 12.0m in 300mm increments	\$ 13.81
130 x 45	2.1 to 12.0m in 300mm increments	\$ 19.95
150 x 45	2.1 to 12.0m in 300mm increments	\$ 24.18
170 x 45	2.1 to 12.0m in 300mm increments	\$ 26.09
200 x 45	2.1 to 12.0m in 300mm increments	\$ 30.70
240 x 45	2.1 to 12.0m in 300mm increments	\$ 36.84
300 x 45	2.1 to 12.0m in 300mm increments	\$ 46.05
360 x 45	2.1 to 12.0m in 300mm increments	\$ 55.26
400 x 45	2.1 to 12.0m in 300mm increments	\$ 61.40
90 x 63	2.1 to 12.0m in 300mm increments	\$ 19.34
130 x 63	2.1 to 12.0m in 300mm increments	\$ 27.93
150 x 63	2.1 to 12.0m in 300mm increments	\$ 32.23
170 x 63	2.1 to 12.0m in 300mm increments	\$ 36.53
200 x 63	2.1 to 12.0m in 300mm increments	\$ 42.98
240 x 63	2.1 to 12.0m in 300mm increments	\$ 51.57
300 x 63	2.1 to 12.0m in 300mm increments	\$ 64.47
360 x 63	2.1 to 12.0m in 300mm increments	\$ 77.36
400 x 63	2.1 to 12.0m in 300mm increments	\$ 85.95
450 x 63	2.1 to 12.0m in 300mm increments	\$ 96.70
300 x 75	2.1 to 12.0m in 300mm increments	\$ 80.58
400 x 75	2.1 to 12.0m in 300mm increments	\$ 107.44
525 x 75	4.8 / 5.4 / 6.0 / 6.6 / 7.2 / 9.0 / 12.0	\$ 141.04

H2 - Smart 10 LVL Wall Stud

Engineered Timber Studs - strength rating of JD4



DIMENSIONS (MM)	LENGTHS (M)	EA
90x35	2.7	\$ 13.12
90x35	3.0	\$ 14.58
90x35	6.0	\$ 30.69

SUBLACO RESTORATION

EST. 1981

H3 - LVL SmartFrame

Design guides available on request. H3 LVL is treated to order, check lead time & prices.

Lengths 11.1 & longer will be charged and supplied as 12.0 m

525 x 75 available in 4.8, 5.4, 6.0, 6.6, 7.2, 9.0, 12.0 m lengths only.

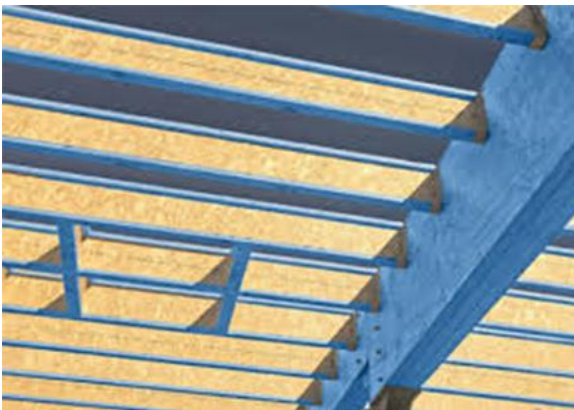


DIMENSIONS (MM)	LENGTHS (M)	L/M
90 x 35	2.1 to 12.0m in 300mm increments	\$ 13.44
120 x 35	2.1 to 12.0m in 300mm increments	\$ 17.91
140 x 35	2.1 to 12.0m in 300mm increments	\$ 20.89
240 x 35	2.1 to 12.0m in 300mm increments	\$ 35.81
90 x 45	2.1 to 12.0m in 300mm increments	\$ 17.28
130 x 45	2.1 to 12.0m in 300mm increments	\$ 24.95
150 x 45	2.1 to 12.0m in 300mm increments	\$ 28.79
170 x 45	2.1 to 12.0m in 300mm increments	\$ 32.62
200 x 45	2.1 to 12.0m in 300mm increments	\$ 38.37
240 x 45	2.1 to 12.0m in 300mm increments	\$ 46.05
300 x 45	2.1 to 12.0m in 300mm increments	\$ 57.56
360 x 45	2.1 to 12.0m in 300mm increments	\$ 69.07
400 x 45	2.1 to 12.0m in 300mm increments	\$ 76.74
90 x 63	2.1 to 12.0m in 300mm increments	\$ 24.18
130 x 63	2.1 to 12.0m in 300mm increments	\$ 34.93
150 x 63	2.1 to 12.0m in 300mm increments	\$ 40.30
170 x 63	2.1 to 12.0m in 300mm increments	\$ 45.67
200 x 63	2.1 to 12.0m in 300mm increments	\$ 53.72
240 x 63	2.1 to 12.0m in 300mm increments	\$ 64.47
300 x 63	2.1 to 12.0m in 300mm increments	\$ 80.58
360 x 63	2.1 to 12.0m in 300mm increments	\$ 96.70
400 x 63	2.1 to 12.0m in 300mm increments	\$ 107.44
450 x 63	2.1 to 12.0m in 300mm increments	\$ 120.88
300 x 75	2.1 to 12.0m in 300mm increments	\$ 95.93
400 x 75	2.1 to 12.0m in 300mm increments	\$ 127.91
525 x 75	4.8 / 5.4 / 6.0 / 6.6 / 7.2 / 9.0 / 12.0	\$ 167.88

H2 - LVL E-Beam -Wesbeam (Blue Stain)

AUSTRALIAN MADE LVL ENGINEERED FOR ROOF CONSTRUCTION

E-Beams strength-to-weight ratio is much higher than regular timber



DIMENSIONS (MM)	LENGTHS (M)	L/M
90 x 35	2.1 to 12.6m in 300mm increments	\$ 9.40
130 x 35	2.1 to 12.6m in 300mm increments	\$ 13.58
150 x 35	2.1 to 12.6m in 300mm increments	\$ 15.66
200 x 35	2.1 to 12.6m in 300mm increments	\$ 20.87
90 x 45	2.1 to 12.6m in 300mm increments	\$ 12.07
150 x 45	2.1 to 12.6m in 300mm increments	\$ 20.12
200 x 45	2.1 to 12.6m in 300mm increments	\$ 26.84
240 x 45	2.1 to 12.6m in 300mm increments	\$ 32.22
300 x 45	2.1 to 12.6m in 300mm increments	\$ 40.27
360 x 45	2.1 to 12.6m in 300mm increments	\$ 48.30
400 x 45	2.1 to 12.6m in 300mm increments	\$ 53.67
90 x 63	2.1 to 12.6m in 300mm increments	\$ 16.90
150 x 63	2.1 to 12.6m in 300mm increments	\$ 28.17
200 x 63	2.1 to 12.6m in 300mm increments	\$ 37.57
240 x 63	2.1 to 12.6m in 300mm increments	\$ 45.07
300 x 63	2.1 to 12.6m in 300mm increments	\$ 56.35
360 x 63	2.1 to 12.6m in 300mm increments	\$ 67.62
400 x 63	2.1 to 12.6m in 300mm increments	\$ 75.14

www.subirest.com.au

SUBLACO RESTORATION

EST. 1981

H2 - I-Joist SmartFrame

Design guides available on request.

360 x 90 available in 600 mm increments only.



DIMENSIONS (MM)	LENGTHS (M)	L/M
200 x 44	0.9 to 12.0m in 300mm increments	\$ 33.60
240 x 40	0.9 to 12.0m in 300mm increments	\$ 33.20
240 x 51	0.9 to 12.0m in 300mm increments	\$ 38.61
240 x 70	0.9 to 12.0m in 300mm increments	\$ 45.60
240 x 90	0.9 to 12.0m in 300mm increments	\$ 59.02
300 x 40	0.9 to 12.0m in 300mm increments	\$ 35.37
300 x 51	0.9 to 12.0m in 300mm increments	\$ 40.86
300 x 70	0.9 to 12.0m in 300mm increments	\$ 48.28
300 x 90	0.9 to 12.0m in 300mm increments	\$ 61.26
360 x 58	0.9 to 12.0m in 300mm increments	\$ 48.01
360 x 90	0.9 to 12.0m in 600mm increments	\$ 64.29

H2 - Blue Pine Framing MGP10

***Stocked**

DETAILS	DIMENSIONS (MM)	LENGTHS (M)	L/M
H2 - Treated Structural	70 x 35	3.6 / 6.0	\$ 4.55
H2 - Treated Structural	90 x 35	3.6 / 4.8 / 6.0	\$ 4.51
H2 - Treated Structural	120 x 35	3.6 / 6.0	\$ 6.04
H2 - Treated Structural	70 x 45	3.6 / 6.0	\$ 5.84
H2 - Treated Structural	90 x 45	3.6 / 4.8 / 6.0	\$ 6.20

H3 - Treated Structural

DETAILS	DIMENSIONS (MM)	LENGTHS (M)	L/M
H3 - Treated Structural	70 x 35	3.6 / 4.2 / 4.8 / 5.4 / 6.0	\$ 6.34
H3 - Treated Structural	90 x 35	3.6 / 4.2 / 4.8 / 5.4 / 6.0	\$ 7.56
H3 - Treated Structural	120 x 35	3.6 / 4.8 / 6.0	\$ 9.82
H3 - Treated Structural	140 x 35	3.6 / 4.8 / 6.0	\$ 12.38
H3 - Treated Structural	190 x 35	3.6 / 4.8 / 6.0	\$ 16.58
H3 - Treated Structural	70 x 45	3.6 / 4.2 / 4.8 / 5.4 / 6.0	\$ 8.22
H3 - Treated Structural	90 x 45	3.6 / 4.2 / 4.8 / 5.4 / 6.0	\$ 9.55
H3 - Treated Structural	120 x 45	3.6 / 4.2 / 4.8 / 5.4 / 6.0	\$ 13.71
H3 - Treated Structural	140 x 45	3.6 / 4.2 / 4.8 / 5.4 / 6.0	\$ 15.31
H3 - Treated Structural	190 x 45	3.6 / 4.2 / 4.8 / 5.4 / 6.0	\$ 20.62
H3 - Treated Structural	240 x 45	3.6 / 4.8 / 6.0	\$ 29.37
H3 - Treated Structural	290 x 45	4.8	\$ 41.07

H4 - Treated Structural

DETAILS	DIMENSIONS (MM)	LENGTHS (M)	L/M
Primed Laminated Dressed CCA H4 F7	44 x 44	5.4	\$ 9.87
Primed Laminated Dressed CCA H4 F7	68 X 44	5.4	\$ 14.43
Primed Laminated Dressed CCA H4 F7	88 X 44	5.4	\$ 18.86